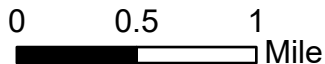




- Road is under repair by multiple contractors and NCDOT Maintenance forces to establish one lane of travel.
 - Recommended Contract: CMGC or Progressive Design-Build.

Legend

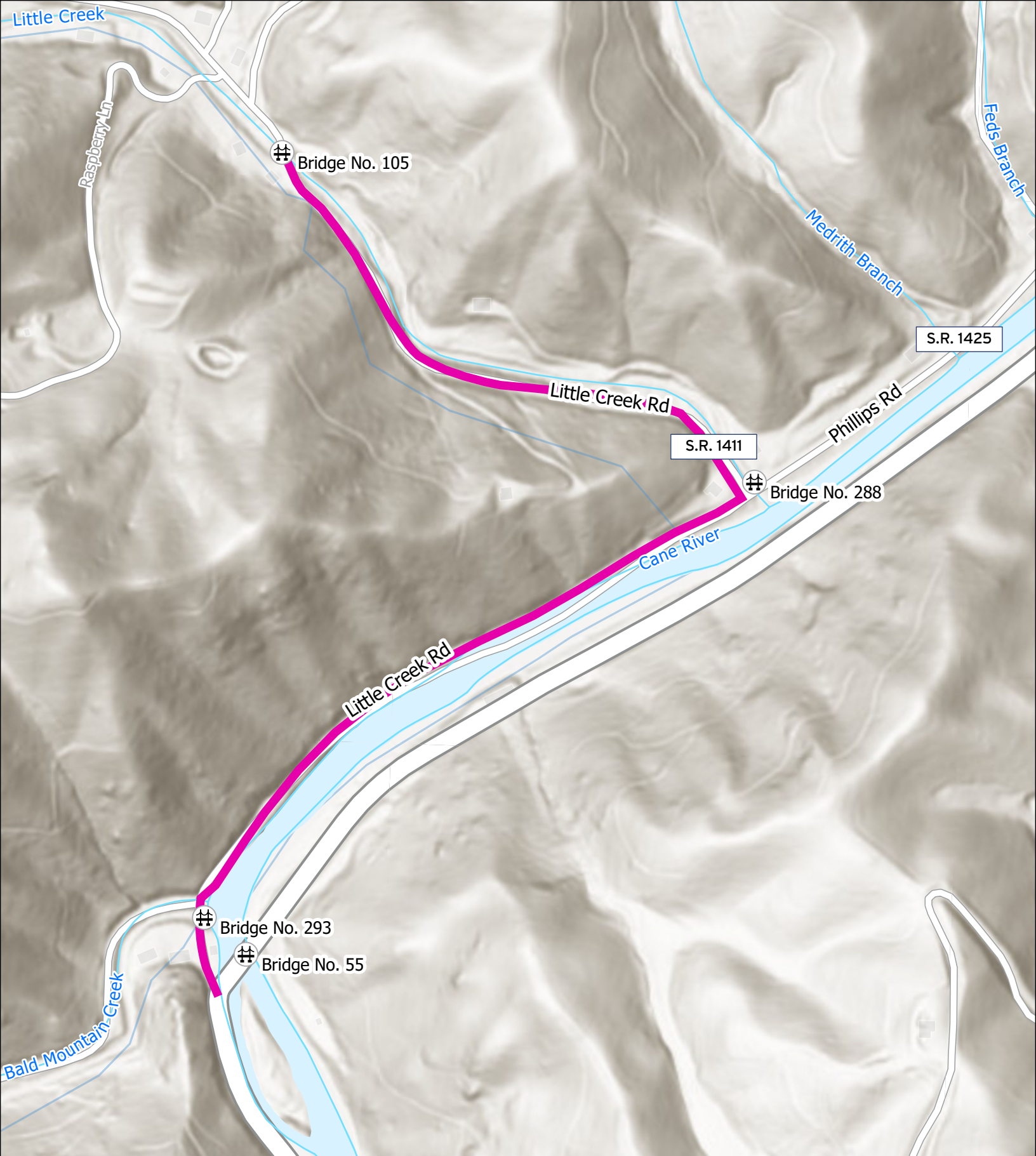
- Affected Area
- Stream
- Bridge



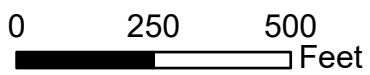
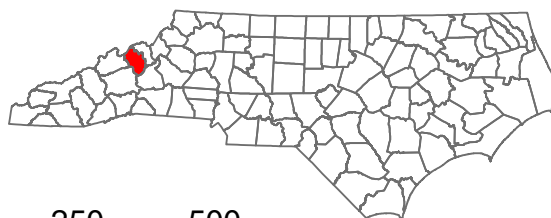
U.S. 19 W / Little Creek Road / Phillips Road, Yancey County -9.8 Miles

From SR 1454, Cane River School Road (35°54'52.6"N 82°23'30.0"W), to SR 1386, Piney Hill Road (35°59'56.8"N 82°23'08.5"W).

Sources: Google Maps, ESRI ArcGIS Basemaps. 2024



- █ Little Creek Rd Affected Area
- Stream
- ## Bridge

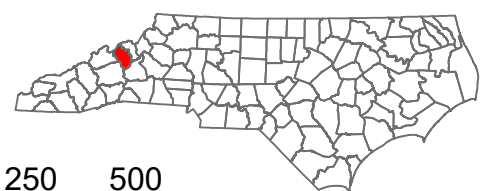
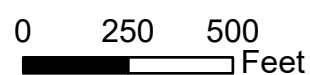


Little Creek Road - 0.76 Mile
 From US 19W (35°59'37.8"N 82°23'37.2"W) to
 Bridge #105 (36°00'01.5"N 82°23'35.6"W).



Legend

- Phillips Rd Affected Area
- Stream
- ⊕ Bridge



Phillips Road - 0.63 Mile
 From Little Creek Road (SR 1411)
 (35°59'52.6"N 82°23'18.7"W) to EOM
 (35°59'55.3"N 82°22'45.2"W).